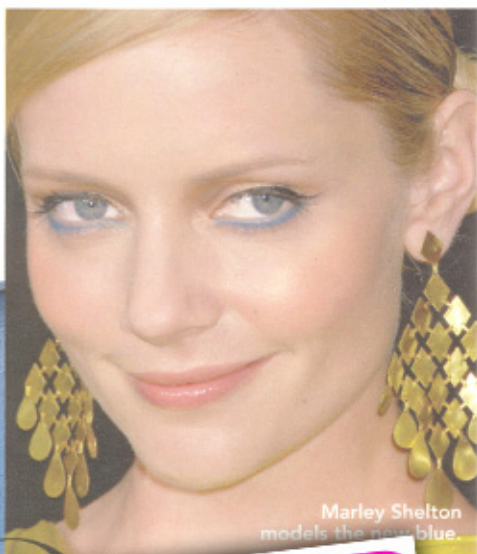


All your beauty questions answered

By Andrea F.



Marley Shelton models the new blue.



Q How can I quickly tone down a flushed, red face?

—M.S., WORCESTER, MASS.

I used to look like a human strawberry after I worked up a sweat, until my dermatologist, NYC's Debra Jaliman, M.D., told me to mix a half cup of milk with a little water and apply using a cotton pad; it calms my skin right down. If there's no milk around, I use Clinique Redness Solutions Urgent Relief Cream (\$30, clinique.com), or La Roche-Posay Rosaliac Anti-Redness Moisturizer (below, \$31, laroche-posay.com), two products pros love.



A green-tinted cream offsets pink in your skin.

Minneapolis stylist Pearson Kn... with a great mask: Bumble and Bumble Masque (\$24, bumbleandbuckle.com for salons).

Andrea's blog, or sign up for her new weekly Beautygram at glamour.com.